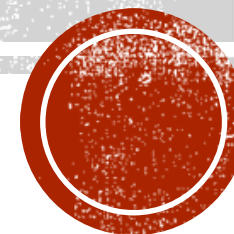


# 2018 DUCK BLIND DRAWING



# OUTLINE

- New Instruction
- Orientation
  - Rules Highlights
  - Common Issues
- Water Allocation and Impacts on the Ponds
- CDFW Game Warden Presentation
- Piute Ponds Work
- iSportsman Resources



# UPDATED INSTRUCTION – WHAT'S NEW FOR WATERFOWL HUNTING?

- iSportsman = all monetary transactions, resources, etc.
- Priority System updated with new level 3 for qualified volunteers.
- No hunting on Christmas or Thanksgiving Day.
- Limit on number of shot shells allowed in the field (25).
- Clean up trash in blind every time hunted, not just end of season.
- Hunter hotline no longer updated. All news, including closures will be posted on iSportsman website.



# RULES HIGHLIGHTED

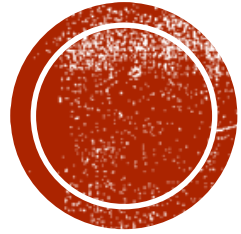
- Hunting on Edwards AFB is a PRIVILEGE NOT A RIGHT
- Follow EAFB-I 32-7064 and California Game Codes
- Hunting at Piute
  - No jump shooting
  - Must leave a wing on bird for ID – stop at check points
  - No motorized watercraft
  - No consumption of alcohol
  - No shooting within 200 yards of occupied campground, blinds or across roads
  - Drive slow on roads within the complex
  - Unauthorized ground disturbance is prohibited
  - Do not move blinds without authorization
  - Do not leave unattended firearms at anytime, including vehicle



# COMMON ISSUES

- Not carrying all required licenses and applicable stamps
- Not reporting harvests
- Not parking in authorized areas
- Not correctly identifying birds
- Shooting birds when possibility of retrieval is low
- Sky busting
- Being in blind 30 minutes prior to shoot time or AFTER 0900
- Not being respectful
- Tampering with water control structures

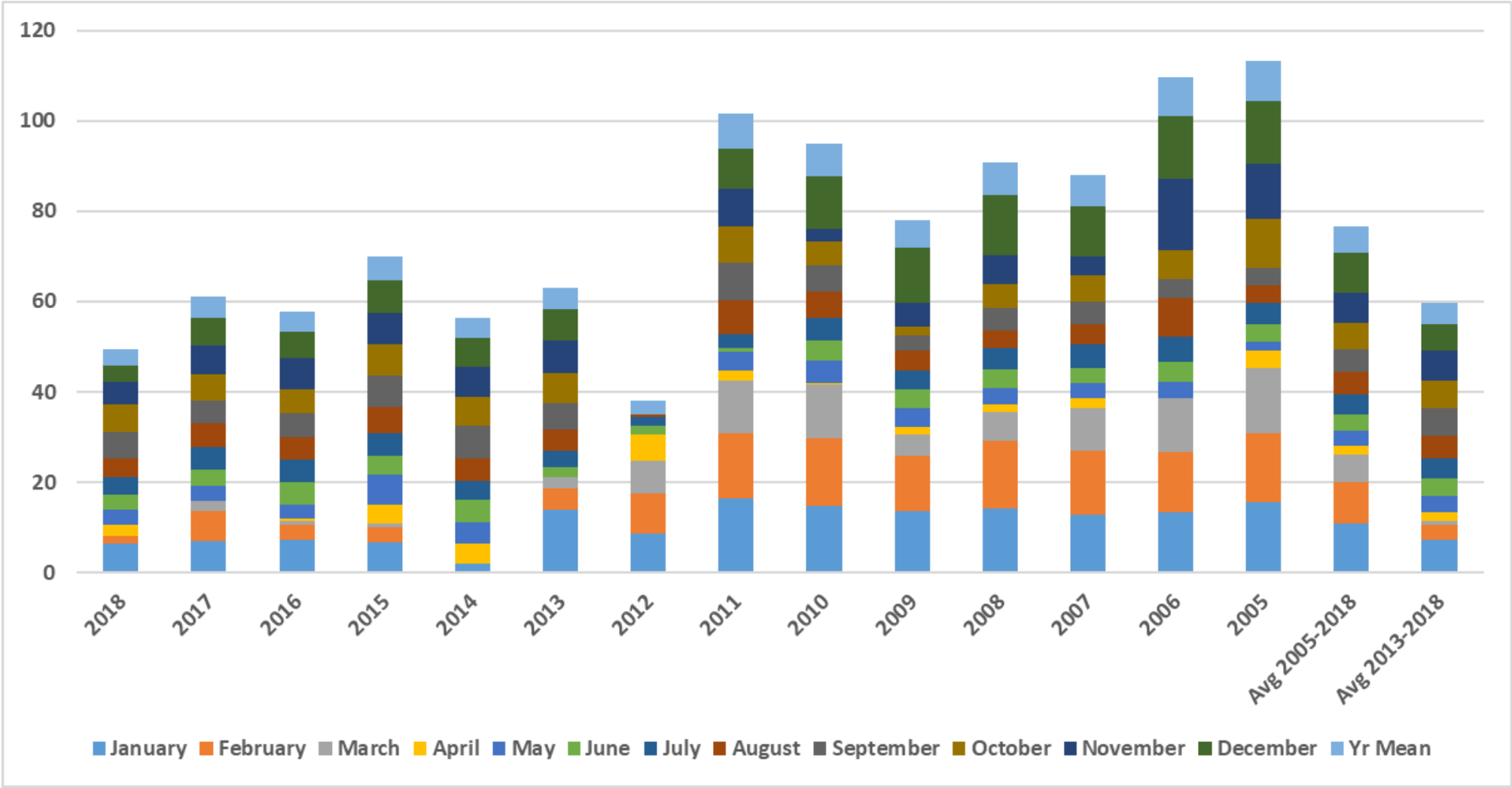




# **WATER ALLOCATIONS AND THE IMPACT**



# WATER ALLOCATION TRENDS

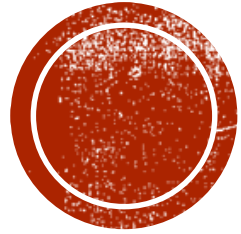


# WHAT DOES IT MEAN?

- Not all ponds will be filled as fast or as high as in previous years.
- Not all blinds will have water opening day.
- Expect all ponds will have water eventually.
- How are the ponds filled?
  - Ponds are gravity fed.
  - Ponds are connected.
  - Ponds are filled to enhance first habitat for wildlife and management goals and secondly for recreation. Generally, what is good for the wildlife is good for recreation.
- Tampering with water control structures
  - It is illegal
  - Is a safety issue
  - Can damage infrastructure
  - Can interrupt/delay recreational opportunities for others

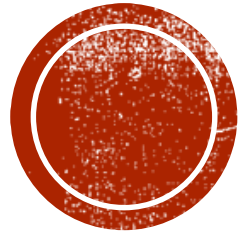






**CALIFORNIA FISH AND  
WILDLIFE GAME WARDEN  
BRIEFING**





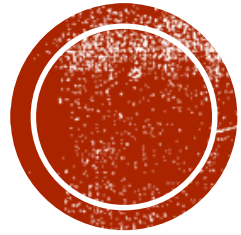
# 2018 PROJECTS AND FUTURE PROJECTS



# PIUTE WORK

- Invasive Species Treatments
- Habitat Restoration
- Infrastructure work out for bid
- Wildland fire crew
  - Rotating system
  - Opportunity to remove structures





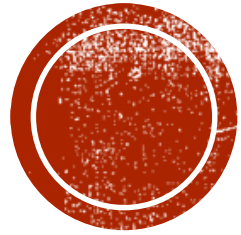
# ISPORTSMAN RESOURCES



# ISPORTSMAN SYSTEM

- Permit Purchasing
- Blind purchasing
  - Will become available after the blind drawing for 72 hrs
  - If no record exists with 412 CEG/CEVA it will become invalidated
- Other resources:
  - Maps
  - Checking In/Out = Digital Survey Forms, what is and is not occupied
  - Contact list (not publically available, will send link)
  - Waterfowl identification





# **BLIND DRAWING!**

Please return flags to Station 6!