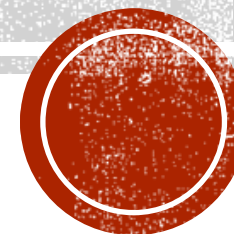


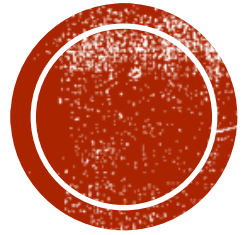
2022 DUCK BLIND DRAWING



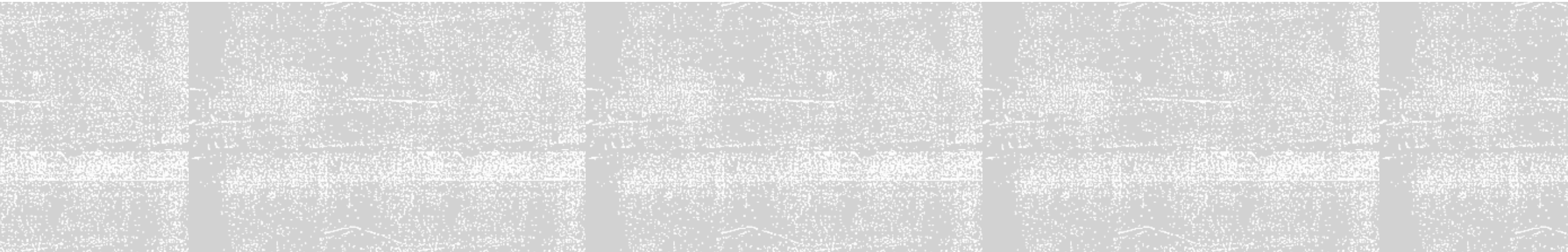
OUTLINE

- Hunting Instruction
 - Rules Highlights
 - Common Issues
 - COVID-19 Modifications
- Water Allocation and Impacts on the Ponds
- Conservation Law Enforcement Officers
- Piute Ponds Work
- iSportsman Resources
- Blind Drawing





HUNTING INSTRUCTION



RULES HIGHLIGHTED

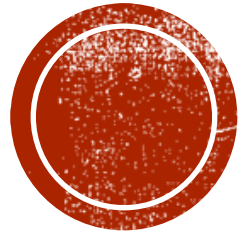
- Hunting on Edwards AFB is a PRIVILEGE NOT A RIGHT
- Follow EAFB-I 32-7064 and California Game Codes
- Hunting at Piute
 - No jump shooting
 - Must leave a wing on bird for ID – stop at check points
 - No motorized watercraft
 - No consumption of alcohol
 - No shooting within 200 yards of occupied campground, blinds or across roads
 - Drive slow on roads within the complex – 15 mph or less
 - Unauthorized ground disturbance is prohibited
 - Do not move blinds without authorization
 - Do not leave unattended firearms at anytime, including within your vehicle
 - Limit on number of shot shells allowed in the field (25).
 - Clean up trash in blind every time hunted, not just end of season.



COMMON ISSUES

- Not carrying all required licenses and applicable stamps
- Not reporting harvests
- Not parking in authorized areas
- Not correctly identifying birds
- Shooting birds when possibility of retrieval is low to none
- Sky busting
- Being in blind 30 minutes prior to shoot time or AFTER 0900
- Not being respectful
- Tampering with water control structures
- Leaving trash
- Not keeping hunting equipment/paraphernalia contained
 - All equipment should have your name on them if leaving within the complex. This includes boats and decoys.
 - All equipment should be contained within your blind, not on the dikes or in the parking lots.
 - All boats left should be securely tethered and off the roads.
 - All equipment left at the Piute Ponds Complex is left at your own risk. Edwards AFB does not guarantee against tampering or theft.





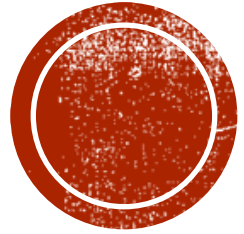
COVID-19 ADJUSTMENTS TO THE HUNTING SEASON



BALANCING SAFETY AND RECREATIONAL OPPORTUNITIES

- The Piute Ponds Complex is open to community recreation with restrictions identified at <https://www.edwards.af.mil/coronavirus/>. Failure to comply with all COVID-19 restrictions will subject recreationalists to temporary or permanent revocation of access and/or hunting privileges.
- Recreational access may be terminated at any time if it is determined that the opening is too great a risk to the mission and well-being of personnel at Edwards AFB.
- Passes are still required for access to the Piute Ponds Complex if you do not have base access.
- Special considerations for the duck hunting season:
 - Duck Blind drawing will be held electronically (described later in presentation)
 - Timeline for blind construction will follow guidelines outline in EAFB-I 32-7064, unless special circumstances dictate otherwise, which would be disseminated in writing.
 - Maximum number of persons allowed in a hunting blind is TWO people unless HPCON downgrades to 0.

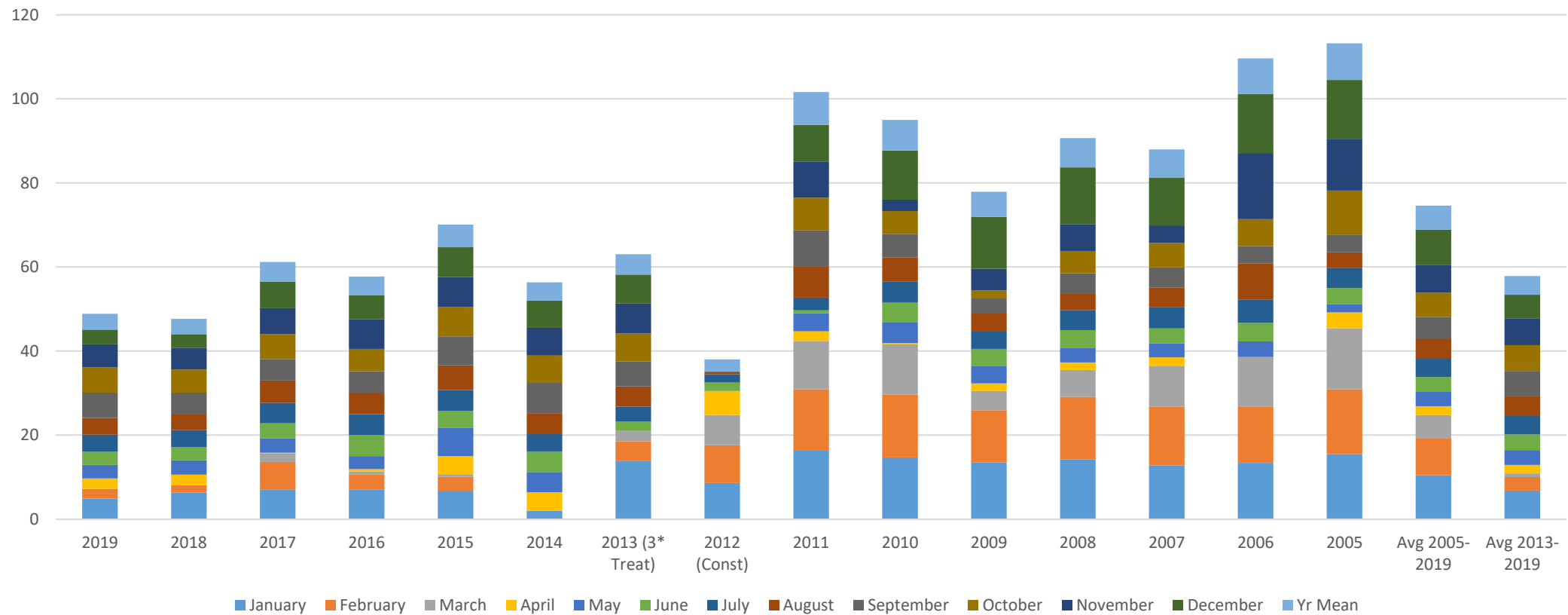




WATER ALLOCATIONS AND THE IMPACT



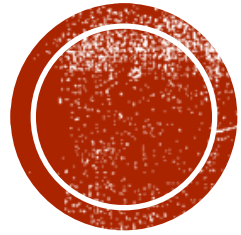
WATER ALLOCATION TRENDS



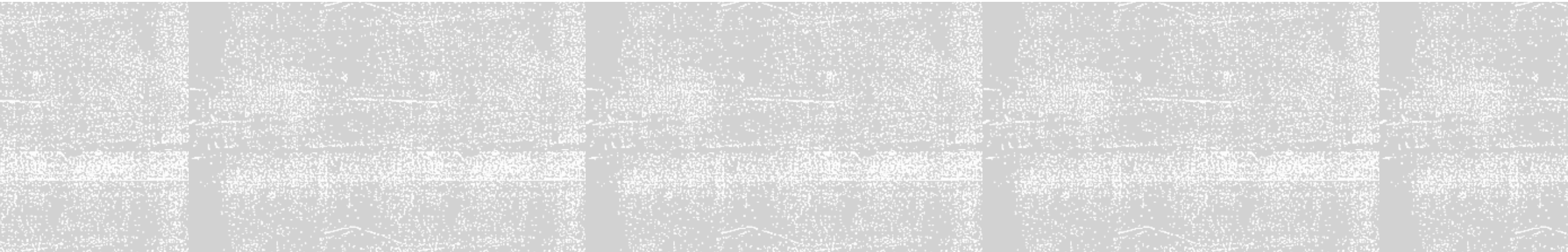
WHAT DOES IT MEAN?

- Not all ponds will be filled as fast or as high as in previous years.
- Not all blinds will have water opening day.
- Expect all ponds will have water eventually.
- How are the ponds filled?
 - Ponds are gravity fed.
 - Ponds are connected.
 - Ponds are filled to enhance first habitat for wildlife and management goals and secondly for recreation. Generally, what is good for the wildlife is good for recreation.
- Tampering with water control structures
 - It is illegal
 - Is a safety issue
 - Can damage infrastructure
 - Can interrupt/delay recreational opportunities for others





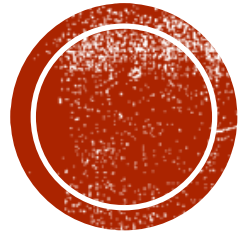
CONSERVATION LAW ENFORCEMENT



GAME WARDENS

- USFWS conservation law enforcement officer does patrols throughout the hunting season.
- CDFWS may still do patrols/random checks at their discretion.
- Please be courteous and cooperative with all law enforcement.
- Be prepared to show your permits and be inspected at any time while hunting on the base.
- If you have any questions about rules and regulations, please reach out.





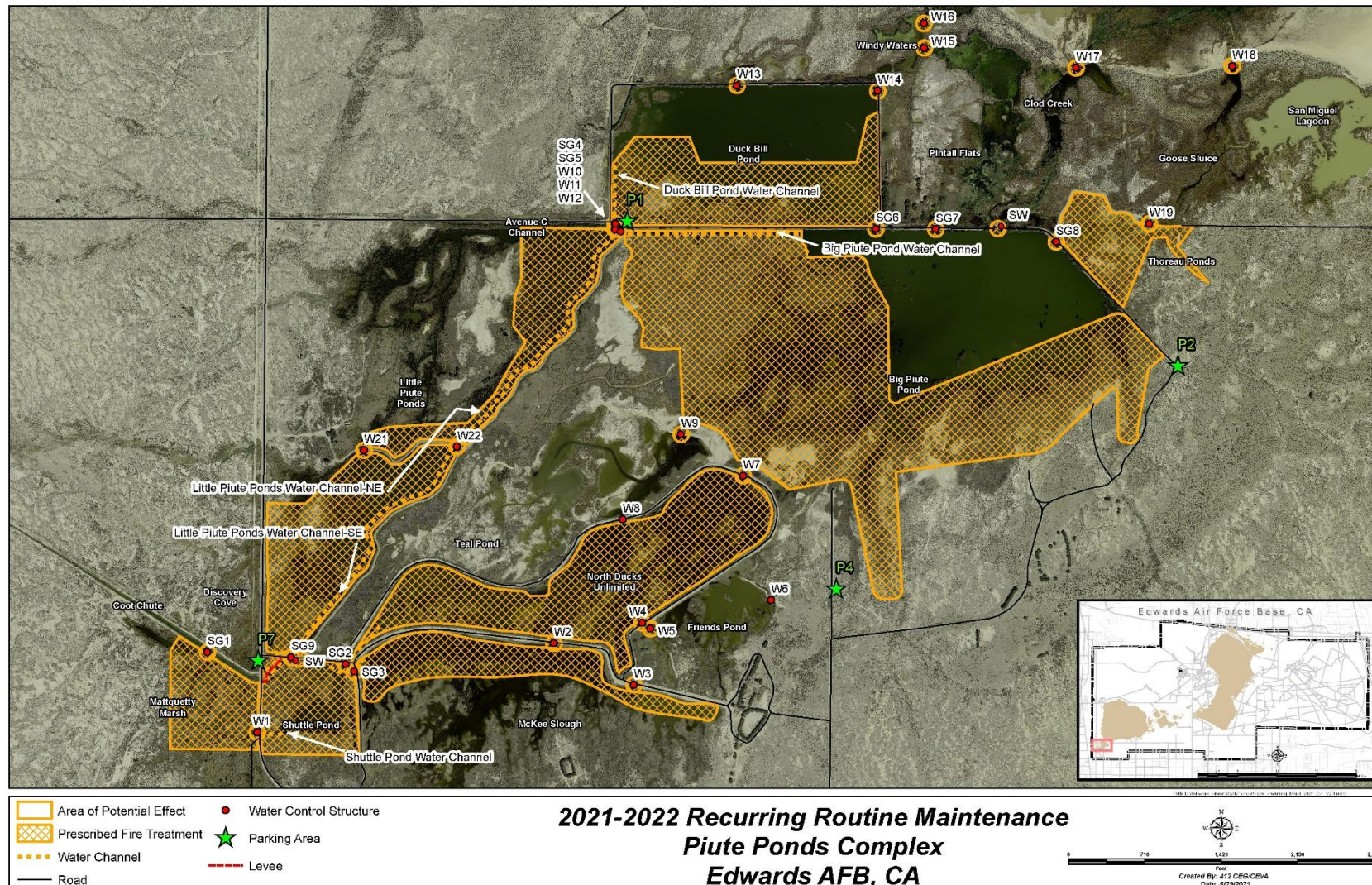
2022 PROJECTS AND FUTURE PROJECTS



PIUTE WORK

- Invasive Species Treatments – work continues. Please do your part and make sure you clean off your clothes, cars, and equipment before bringing them onto base and as you leave your hunting area.
- Habitat Restoration – seeing more and more success! Additional plantings will occur this winter/spring. Please note signage/roping of new plantings and stay out of restoration areas.
- Yearly maintenance expected to continue through September/early October. Please use situational awareness when around heavy equipment and respect road closures.
- Wildland fire crew
 - Prescribed burns occurred in July. Another burn planned around Big Piute in January. Dates may vary depending on climatic conditions. Notifications will be sent out once specific dates are chosen (ponds will be closed during burning activities).
 - Rotating system. Previous burns were successful but growth came back with a vengeance. Taking lessons learned to determine proper interval for burns.
- Additional infrastructure work to continue this year and next
 - Remove vegetation and sediment around a few channels and infrastructure improvements to assist with water management
 - Repairs to spillway to the north of Big Piute
 - Installation of additional rumble plates at key access points to assist with invasive species management
 - New infrastructure to be installed in Shuttle Pond to assist in future maintenance.
 - Various areas may be closed while they work with heavy equipment





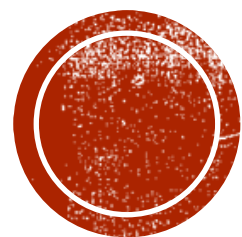
PREScribed BURNS AND VEGETATION REMOVAL

Ambitious prescribed burn areas to work on in the next couple of years. Amount accomplished any given year will depend on weather and other factors. Aiming to burned: Duckbill, Shuttle, Little Piute South, and North Ducks Unlimited. Experimental burn for Big Piute in January.

REMINDER: we will try to protect existing structures but do not guarantee their safety.

Most of the blinds in NDU were consumed during the prescribed fire activities and will need to be rebuilt.





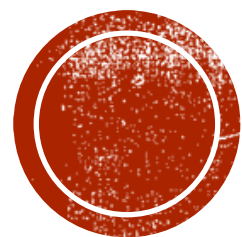
ISPORTSMAN RESOURCES



ISPORTSMAN SYSTEM

- Permit Purchasing
- Blind purchasing
 - Will become available after the blind drawing stay tuned for your email
 - If no record exists with 412 CEG/CEVA it will become invalidated
 - No refunds
- Other resources:
 - Maps
 - Checking In/Out = Digital Survey Forms, what is and is not occupied
 - Contact list (not publically available, will send link)
 - Waterfowl identification resources





BLIND DRAWING!



ELECTRONIC DRAWING

- Duck blind drawing will be conducted through the Edwards AFB iSportsman web-based platform (<http://edwards.isportsman.net>).
- Eligible personnel will select an entry ticket electronically to be entered into the drawing. BOTH partners must enter to be eligible. Follow the iSportsman manual for group entries. Individuals with highest priority need to get their entries in before their lower priority partners.
- Each hunter who has selected their blind partner must send an email to misty.hailstone.1@us.af.mil specifying their partner before the blind drawing is run. If a hunter has not selected a blind partner, one may be assigned.
- In the same email, referenced above, a hunter must specify if they are requesting a mobility impaired duck blind.
- Each hunter must hit the acknowledge button on the windows that pop-up verifying:
 - They have read and understand EAFBI 32-7064.
 - They have entered the proper customer type they qualify for in their profile, which determines their priority status. NOTE: ensure the customer type mirrors priority categories in EAFBI 32-7064. Disabled veteran and 100% disable veteran are not put in the same categories.
 - They have purchased an Edwards AFB hunting permit, state waterfowl hunting permit, state duck stamp, and a federal duck stamp prior to the duck blind drawing.
 - If they are requesting a mobility impaired blind, they have a legitimate need as verified by DMV placard or medical paperwork.
 - That the season may be cancelled at any time due to COVID-19 health concerns and necessary restrictions.
 - Once purchased, no refunds for duck blinds will be made.
- The drawing will be run in multiple phases following priority levels outlined in EAFBI 32-7064.
- Entrants will be notified with an email if they are eligible to choose a blind.
- An email will be sent to each individual with the order in which they have been drawn and a selection of available blinds to choose from. The entrants have up to 24 hours to respond to which blind they would like to reserve before the next eligible hunter is notified of available duck blinds.
- Once a blind is chosen, the hunters have until 1700 hours on 7 October 2022 to purchase their reservations. After purchase, no refunds are permitted. If the whole season is cancelled, credit will be provided to hunters to use towards hunting permits or blind reservations the following season. If any part of the season is open for hunting, no credits will be provided.
- Due to the balance of health and safety concerns, no volunteer parties for priority hour credits will be offered. Individual volunteering is permitted following volunteer guidelines that can be found at: <https://edwards.isportsman.net/VolunteeringAtPiutePonds.aspx>



REMINDER ABOUT BLINDS

- Blind drawing is for location. No guarantee of pre-existing structure or condition of structure. New locations may have been chosen to enhance hunting opportunity.
- Some blinds may be damaged or removed from prescribed burns.
- Some blinds may need to be moved to water edge due to tulle growth.
- Blind owners are responsible for ensuring a safe hunting structure.
- Hunters should not wait until opening day to find location of blinds!
- If blinds are not purchased, those locations will be removed from available hunting locations.
- Do not change the direction or location of blind without asking permission to do so. Locations and directions are typically chosen for safety.
- You may not create a road to your blind.



CONTACT INFO:

Misty Hailstone

Email: misty.hailstone.1@us.af.mil

Phone: 661-275-2435 or 661-810-8099

